



This first quarterly report of 2023 provides an update of the activities completed in this quarter, the data available and key statistics and metrics gathered from insights collected by the project team and the strategic partners and general partners.

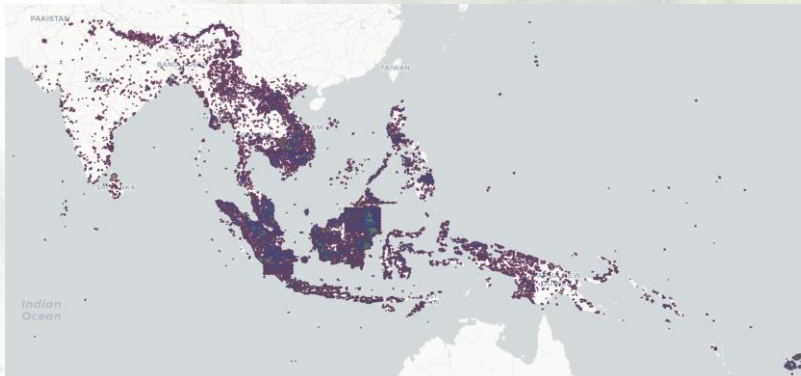
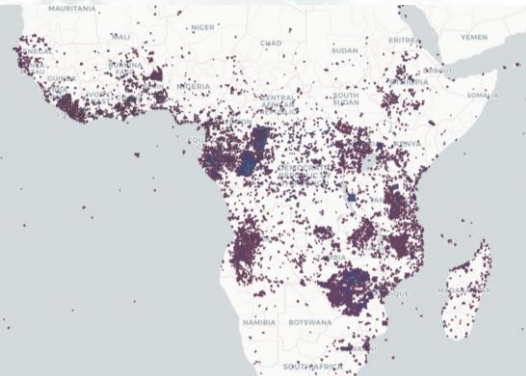
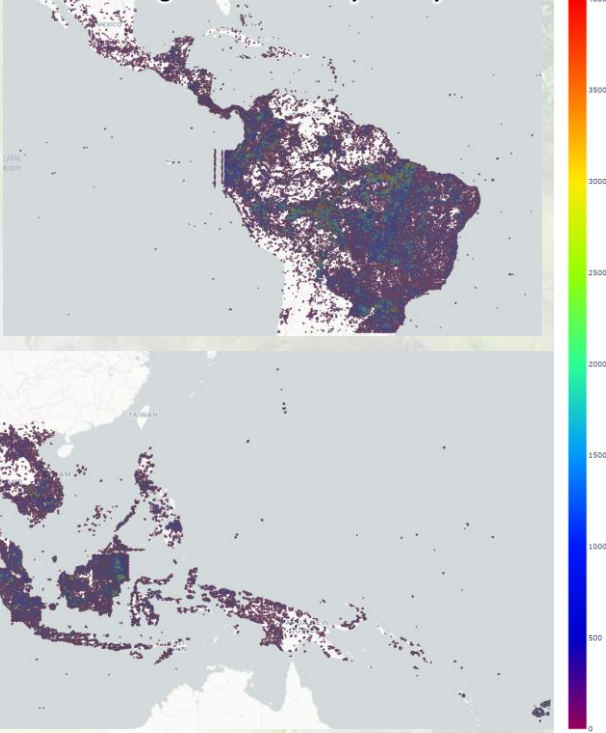
### News and Media

Announced in March 2023 NICFI has been confirmed that the [NICFI Satellite Data Program is extended](#) for the full term and will run until September 2024, continuing the access to over 18000 users for monthly monitoring and archival mosaics.

KSAT and NICFI were **awarded a Planet Purpose Award** in March under the “Be Collaborative” category recognizing the work undertaken on the NICFI Satellite Data Program. The award will be presented at Planet Explore, April 2023.

New [training materials](#) developed by UN-FAO provide step by step guides to accessing the NICFI Satellite Data Program within SEPAL.

Number of image tiles streamed by country



### Activities

- Continued delivery of monthly mosaics.
- User outreach and support across user groups.
- Database of Users Stories continually updated and organised by user group.
- Ongoing support to Purpose Allies/Platform partners with quarterly meetings
- Continue working with UN Biodiversity Lab with the hope to bring them onboard as a Purpose Ally
- Continue to build momentum in engagement activities including to new groups and initiatives.
- Ongoing outreach with other geospatial software and platform providers where relevant.
- Capacity building support with key users. Continue to populate user stories database and resource hub with community and program led resources.
- Support Project Evaluation process with Deloitte and NOSA
- Preparation of 1 pager to promote the program
- Prepare H1 2023 User Survey
- Analyse outcomes of Level 2 reporting
- Prepare materials for L2 refresher training

**97 countries** included in the NICFI program with over **18,000 registered users** from **158 countries** worldwide. To date, **80 million tiles** streamed from Planet Explorer.

Number of registered users

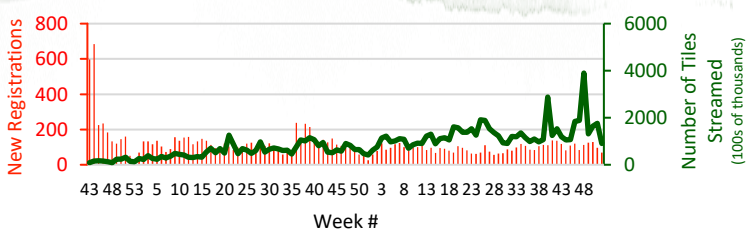


### Events

- Upstream Tech webinar – 31<sup>st</sup> January (online)
- Science User Roundtable – 16<sup>th</sup> Feb (online)

### Resources and Helpdesk

Tier one support has handled 76 tickets in this quarter (485 overall + 597 overall Tier 1 requests sent directly to Planet) with issues or questions typically resolved within hours. Most commonly these have been on topics of download and discovery, access through other platforms such as GEE. Additional support material in the form of FAQs, User guides available in five languages (English, Spanish, French, Portuguese and Bahasa Indonesian), a Community forum as well as a Twitter page continue to be well used.





# NICFI SATELLITE DATA 2023 Q1 Update PROGRAM

KSAT  
KONGSBERG SATELLITE SERVICES

planet.

AIRBUS

## Publications

Some examples of journal articles using the Satellite Data Program are below:

- [Refined mapping of tree cover at fine-scale using time-series Planet-NICFI and Sentinel-1 imagery for Southeast Asia \(2016–2021\)](#)
- [More than one quarter of Africa's tree cover is found outside areas previously classified as forest](#)
- [Estimating Double Cropping Plantations in the Brazilian Cerrado through PlanetScope Monthly Mosaics](#)

## Activities next Quarter

- Ongoing delivery of Level 1 monthly mosaics.
- Ongoing support to Level 2 users.
- Continue working with UN Biodiversity Lab with the hope to bring them onboard as a Purpose Ally
- Ongoing support to Purpose Allies/Platform partners with quarterly meetings.
- Continue to build momentum in engagement activities including to new groups and initiatives.
- Ongoing outreach with other geospatial software and platform providers where relevant.
- Continue to populate user stories database and resource hub with community and program led resources.
- Analyse survey responses
- **Events**
- Level 2 Training and Q&A forum – April online
- GFOI Plenary, Rome - 9-11<sup>th</sup> May
- GLOC, Oslo - 23-25<sup>th</sup> May
- Science roundtable – 1<sup>st</sup> June (online)
- Explorer.Land webinar – 1<sup>st</sup> June
- Indigenous Roundtable - 7/8<sup>th</sup> June (online)
- Pulitzer Centre workshop – 13<sup>th</sup> June (online)
- Welt-weit and Bluo verda Action Network webinar – 14<sup>th</sup> June
- FOSS4G Workshop, Kosovo – 26<sup>th</sup> June
- WRI Land and Carbon Lab Summit, Brussels – 27-29 June

## User Stories

In March 2023 NASA SERVIR and SilvaCarbon [conducted a training in Guatemala](#) to enhance capacities in LCLUC, teaching different methodologies to map change detection using long time series of satellite data including the use of Level 1 data in GEE to assess forest disturbance outputs performance. The training also highlighted how **Guatemala's Forest Institute (INAB)** is using Level 1 data to complement their forest assessment and provide Forest Incentives. Guatemala has had a Forest Incentive system, nationally funded, for over 20 years. The GIS team at INAB have developed a [geoportal](#) where they pull-in the Level 1 data for their forestry incentive program.

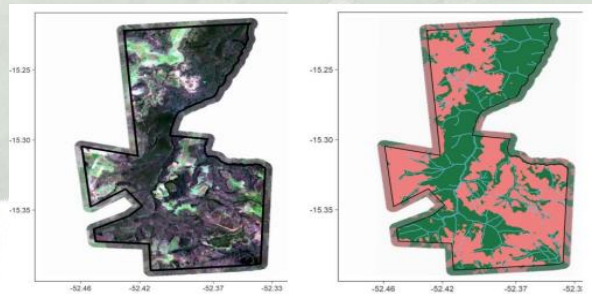


**African Parks** are using the Level 1 mosaics to monitor protected areas in Central African Republic and Mozambique. They use the NICFI Level 1 data in GEE to monitor and understand the protected area landscapes they manage in these regions.



Activities include Vegetation mapping where they have developed a detailed map of the Chinko landscape in GEE by combining Sentinel-2 data with the Level 1 data, which has made it possible to distinguish between wet and dry forests, woodlands and wet and dry grasslands. In addition, for habitat degradation mapping it has been possible to map agriculture and overgrazing using the Python API in GEE. The impact of this has led to improved guidance to land use planning, application for REDD+ and inform species reintroduction strategies.

**IPAM Amazonia** are using the NICFI Satellite data Program (Level 1 and Level 2 access) for the detection of native vegetation degradation which is being conducted within the initiative CONSERV which is a zero deforestation compensation program for areas subject to legal deforestation. In the CONSERV initiative, the areas of native vegetation and environmental liabilities of all rural properties are mapped during the due diligence process. As any degradation implies in the revision of contracts for payment of environmental services.



## Purpose Allies



SINCE NOV 2020

~9k selections of the Planet-NICFI Basemap per month



SINCE APR 2021

11k users  
60k views  
23k sessions



SINCE NOV 2020

~ 300k tile views per month  
35 analysis per week



SINCE DEC 2021

167 views of NICFI related forum posts



Since Q1 2023

## Outreach Partners



Microsoft



@NICFISatData

## Partner profile – ESRI

ESRI is the global market leader in Geographic Information System (GIS) software, location intelligence and mapping. Collaboration between the NICFI Satellite Data Program and ESRI has seen the data made available to users under ESRI's Conservation initiative through ArcGIS online and also through access directly in ArcGIS tools through the Planet Plugin for ArcGIS. The plugin allows users to stream in the Level 1 basemaps directly into their projects and overlay that with other information layers they have. More information on the plugin can be found [here](#).